

WARNING! USE ONLY COMPRESSED AIR,
UNDER NO CIRCUMSTANCES USE
OXYGEN (O₂) OR ANY OTHER GASES,

INSTRUCTION FOR
XS-B50 AIRGUN
XS-B51



MADE IN CHINA

WARNING!

NOT A TOY! ADULT SUPERVISION REQUIRED. MISUSE OR CARELESS USE MAY CAUSE SERIOUS INJURY OR DEATH. MAY BE DANGEROUS UP TO 350 YARDS (320 METERS).

THIS AIRGUN IS RECOMMENDED FOR USE BY THOSE 18 YEARS OF AGE OR OLDER. READ ALL INSTRUCTIONS BEFORE USING. THE PURCHASER AND USER SHOULD CONFORM TO ALL LAWS, GOVERNING USE AND OWNERSHIP OF YOUR AIR GUNS.

ALWAYS TREAT AND HANDLE THIS AIRGUN AS THOUGH IT WAS LOADED.
ALWAYS KEEP THE SAFETY ENGAGED AND THE MUZZLE POINTED IN A SAFE DIRECTION.
ALWAYS BE AWARE OF YOUR TARGET AND WHAT LIES BEHIND IT.

IN ANY CASE, DO NOT TO CHARGE YOUR AIRGUN EXCEED 20 MPa.
PLEASE USE THE CORRECT LEAD PELLET. NEVER USE NAILS OR OTHER SUBSTANCES. DO NOT DRY FIRE YOUR AIRGUN.
IT WILL DAMAGE YOUR EYES IF YOU POINTING THE SCOPE TO THE SUN OR OTHER BRIGHEN SUBSTANCES.

MODEL: XS-B50 XS-B51

1. SPECIFICATION:

Caliber: .177/.22
Rifle: 12 with guiding length 480mm
Barrel Length: 18.5" (470mm)
Full Length: 41" (1040mm)
Total Weight: 7.9lbs(3.6kg)
Pressure: 20Mpa(200bar)--- 80shots at 26J

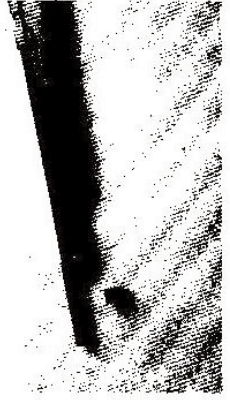
2. TECHNICAL FEATURES:

XS-B50 air rifle is a precharged pneumatic airgun using the high-pressure air torred in its reservoir as resource to shoot. It is compact and excellent in appearance. The main components of the airgun are made of high quality steels, through special treatment, inspected strictly. Its performances reached the standard QB1202. All process reached the criterion of ISO 9000. It has a high velocity, high precision, and no vibration.

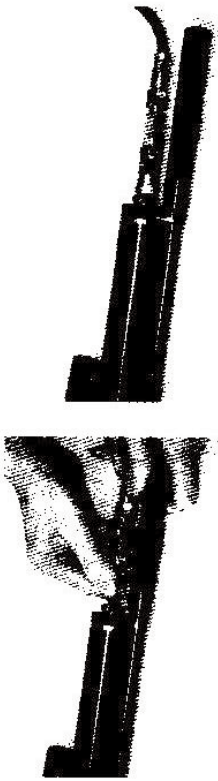
3. PROCEDURE

A. Charging

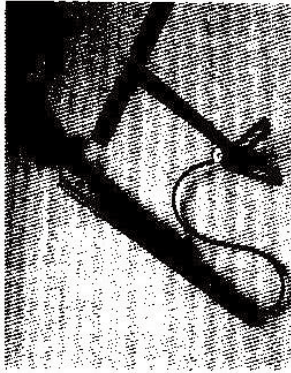
- ① Place your airgun on a clean dry surface.
- ② Take off the cap of the reservoir under the barrel.



- ③ Connect the stroke pump(BAM inflator) to your airgun.



- ④ Close bleeder screw on the base of the pump.
⑤ Begin pumping air into your gun, using smooth, full strokes.



- ⑥ Continue pumping until pressure reaches 20Mpa.(200Bar).

WARNING: The maximum pressure is not exceed 20Mpa!

- ⑦ Loosen bleeder screw on the pump quickly.
⑧ Disconnect the pump from your airgun.
⑨ Put on the cap of the reservoir.

B. Setting Safety-----Manual

Press the right tuber of the safety (with the letter "S"), the airgun is in safe mode.

Press the left tuber of the safety (no the letter "S"), the airgun is not in safe mode.



C. Cocking

Before cocking, you must be sure the airgun is in safe mode.

- ① Hold the stock with your left forearm, support the butt with your right shoulder.



- ② Turn the rear cupreous push-lever 90° anti-clockwise.



- ③ Pull it back until the hammer is engaged with the sear correctly.

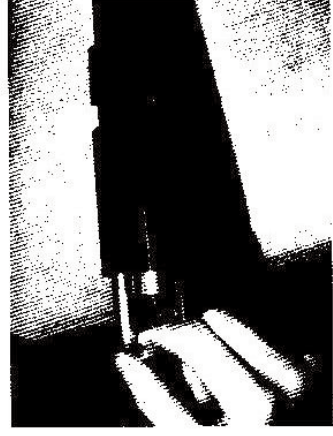


D. Loading and Resetr

- ① Insert a proper size lead pellet into the chamber.



- ② Push the rear cupreous lever ahead.



- ③ Turn the lever 90° clockwise to its original position



E. Aiming and shooting

- ① Take your eyes apart from the scope a distance and adjust the sight.
- ② Loose the ocular locking ring, adjust the scope until it is clear, then fix it.



- ③ Point the target and make the cross center of the rifle scope superposed
- ④ Hold the airgun steadily and pull the trigger smoothly.

