

-1-

HÄMMERLI®

Pneuma™ Pre-Charged Pneumatic Air Rifle



OPERATION MANUAL

Shoots Lead Pellets 

Hämmarli Model	Caliber	Velocity	Danger Distance
Pneuma	.177	1200 fps	625 yds
	.22	1050 fps	575 yds

Read this owner's operation manual completely.

This airgun is not a toy. Guns differ in their operation and you are never ready to handle any gun until you are thoroughly familiar with it. Treat it with the same respect you would a firearm. Always carefully follow the safety instructions found in this owner's manual and keep this manual in a safe place for future use.

THIS IS A HIGH POWERED AIRGUN RECOMMENDED FOR USE BY ADULTS ONLY. READ ALL INSTRUCTIONS BEFORE USING. THE PURCHASER AND USER SHOULD CONFORM TO ALL LAWS GOVERNING THE USE AND OWNERSHIP OF AIRGUNS.

⚠️ WARNING: THIS AIRGUN IS RECOMMENDED FOR ADULT USE ONLY. MISUSE OR CARELESS USE MAY CAUSE SERIOUS INJURY OR DEATH. MAY BE DANGEROUS UP TO 625 YARDS (571 METERS).

⚠️ WARNING: DO NOT INHALE THE DUST OF LEAD PELLETS OR PUT PELLETS IN MOUTH. WASH HANDS AFTER HANDLING. THIS PRODUCT CONTAINS LEAD, A CHEMICAL KNOWN TO THE STATE OF CALIFORNIA TO CAUSE CANCER AND BIRTH DEFECTS OR OTHER REPRODUCTIVE HARM.

DO NOT LOAD A PELLET INTO THE AIRGUN UNTIL YOU ARE READY TO SHOOT. IF YOU DO LOAD A PELLET AND THEN DECIDE NOT TO SHOOT, REMOVE IT EITHER MANUALLY OR BY SHOOTING THE AIRGUN AT A SAFE TARGET. AN UNLOADED, UNCOCKED GUN IS SAFEST. ACCIDENTS HAPPEN FAST, FATALLY WOUNDING SOMEONE IS A TERRIBLE THING. PLEASE SHOOT SAFELY.

⚠️ CAUTION: WHEN HANDLING ANY GUN YOU AND OTHERS WITH YOU SHOULD WEAR SHOOTING GLASSES TO PROTECT YOUR EYES. IF YOU WEAR READING GLASSES, YOU SHOULD WEAR SAFETY GLASSES INTENDED FOR USE OVER NORMAL OPTICAL READING GLASSES.



⚠️ WARNING: BE SURE THE AIRGUN IS ALWAYS POINTED IN A SAFE DIRECTION. NEVER POINT THE AIRGUN AT ANY PERSON EVEN IF IT IS UNCOCKED AND UNLOADED. NEVER POINT THE AIR RIFLE AT ANYTHING YOU DO NOT INTEND TO SHOOT. ALWAYS ASSUME AND HANDLE THE AIRGUN AS IF IT WERE LOADED AND READY TO FIRE.

⚠️ WARNING: DO NOT BRANDISH OR DISPLAY THIS AIRGUN IN PUBLIC—IT MAY CONFUSE PEOPLE AND MAY BE A CRIME. POLICE AND OTHERS MAY THINK IT IS A FIREARM. DO NOT CHANGE THE COLORATION AND MARKINGS TO MAKE IT LOOK MORE LIKE A FIREARM. THAT IS DANGEROUS AND MAY BE A CRIME.

HÄMMERLI®

HÄMMERLI AIR RIFLE OPERATION STEPS

STEP 1. OPERATING THE SAFETY

- To manually put the Pneuma "ON SAFE", pull the safety all the way toward the rear of the stock. It is "ON SAFE" when the red dot is not showing (see illustration 2).
- The Hämmerli Pneuma has an automatic safety. When the air rifle is cocked it is automatically put "ON SAFE".
- The safety on the Hämmerli Pneuma is located on the top of the receiver (see illustration 2).
- The safety will be automatically placed in the "ON SAFE" position after the air rifle has been cocked.
- The safety is not "ON SAFE" unless it is pulled all the way back towards the rear of the stock and the red dot on the safety is not showing.
- To put the Pneuma "OFF SAFE", push the safety all the way forward toward the barrel. When you see the red dot on the safety, the air rifle is "OFF SAFE" and can be fired.



⚠ ATTENTION: BEFORE YOU PUT YOUR AIR RIFLE "OFF SAFE", BE ABSOLUTELY CERTAIN THAT YOUR AIR RIFLE IS POINTED IN A SAFE DIRECTION AND THAT YOU ARE READY TO FIRE.

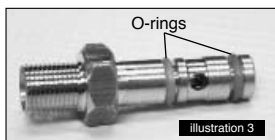
STEP 2. PRESSURIZING AND DEPRESSURIZING THE CYLINDER

2A. PRESSURIZING (FILLING) THE AIR CYLINDER

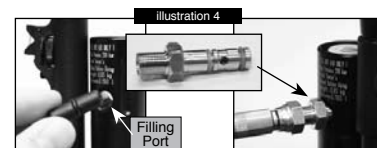
⚠ WARNING: USE ONLY COMPRESSED DRY AIR IN THIS AIRGUN. DO NOT USE ANY OTHER GASES, INCLUDING OXYGEN WHICH CAN CAUSE A FIRE OR EXPLOSION THAT MAY RESULT IN SERIOUS INJURY OR DEATH.

Note: It is recommended that you leave the air cylinder installed in the air rifle while pressurizing to prevent damage to the cylinder and unnecessary wear on the o-ring and valve; however, the Pneuma's air cylinder may be pressurized while out of the air rifle.

- Put the airgun "ON SAFE" and always keep it pointed in a SAFE DIRECTION.
- Make sure the airgun is unloaded and not cocked (See STEP 4).
- Use only a pump designed for filling a pre-charged airgun. Do not use standard (shop or garage) air compressor as these types of air compressors cannot produce the high pressures required to operate the airgun. Your local sporting goods store or scuba diving shop may be able to fill the cylinder.
- Put two o-rings onto the filling adapter (see illustration 3).



- Put a slight amount of silicone grease or one drop RWS Chamber Lube on each of the o-rings on the filling adapter.
- Attach the filling adapter to the pump or air source.
- Push the plug out of the air cylinder (see illustration 4).
- Insert the filling adapter into the filling port of the air cylinder (see illustration 4).
- DO NOT FILL THE AIR CYLINDER TO MORE THAN 200 BAR (2,900 PSI).



OVER FILL

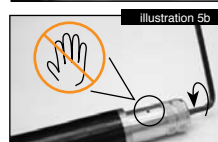
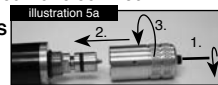
This airgun is designed for optimum performance at a pressure no greater than 200 BAR (2,900 psi). Over filling will not improve performance and may cause the valve to lock. If the airgun has been over filled, make sure the airgun is "ON SAFE". Remove the air cylinder from the airgun. Put the bleed valve onto the air cylinder and release air until the gauge reads "0" (See 2B. Depressurizing the Air Cylinder). If the valve locks, contact Umarex USA Service Department at 1-479-646-4210.

2B. Depressurizing the Air Cylinder

- Put the airgun "ON SAFE" and always keep it pointed in a SAFE DIRECTION.
- Make sure the airgun is unloaded and not cocked (See STEP 4).
- Remove the air cylinder from the airgun by turning it counter clockwise.

CAUTION: NEVER PLACE YOUR HAND OR FINGERS IN FRONT OF THE MUZZLE.

- Back the screw out of the bleed valve by turning it counter clockwise with an allen (hex) wrench (see illustration 5a-1). There is no need to remove it completely.
- Put the bleed valve onto the air cylinder at the valve end (see illustration 5a-2).
- Hold the cylinder away from your body and keep your hands and fingers away from the discharge hole in the bleed valve (see illustration 5b).
- Slowly turn the screw clockwise down into bleed valve until air is being released from the cylinder (see illustration 5b).
- Release air until the gauge shows '0' indicating no air remains in the cylinder.
- Remove the bleed valve.



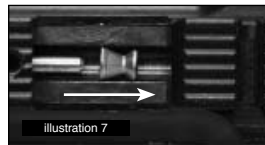
⚠ WARNING: USE ONLY .177 CALIBER PELLETS IN A .177 CALIBER HÄMMERLI PNEUMA AND ONLY .22 CALIBER PELLETS IN A .22 CALIBER HÄMMERLI PNEUMA. NEVER RESUSE FIRED PELLETS. DO NOT USE DEFORMED PELLETS. USE OF ANY OTHER AMMUNITION CAN CAUSE INJURY OR DAMAGE TO PERSONS OR PROPERTY.

- Put the airgun "ON SAFE" and always keep it pointed in a SAFE DIRECTION.
- Be sure the airgun is pressurized (see STEP 2).
- Open the bolt by pulling the lever back until it moves freely.

- Cock the air rifle by pulling the bolt all the way back. Do not force the lever any further than shown in illustration 6 or it may break.

3B. LOADING THE AIR RIFLE

- Place one pellet, nose first, into the loading port (see illustration 7).
- Gently close the bolt to push the pellet into the breech. DO NOT CLOSE THE BOLT WITH FORCE. THIS MAY DAMAGE YOUR AIRGUN.
- Be sure the bolt is closed and locked before firing. If it is not fully closed and locked the pellet may not discharge or the air rifle may jam.



⚠ WARNING: NEVER CARRY AN AIR RIFLE WHILE COCKED AND/OR WHILE LOADED. IT IS BEST TO COCK THE AIR RIFLE ONLY BEFORE SHOOTING. UNDER NO CIRCUMSTANCES SHOULD YOUR AIR RIFLE BE TRANSPORTED OR CARRIED WHILE COCKED AND/OR LOADED.

STEP 4. DECOCKING AND UNLOADING THE AIR RIFLE

4A. UNLOADING

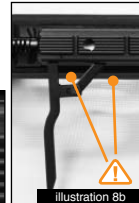
- Fire the pellet at a SAFE TARGET to unload the airgun. If this is not practical:
- Put the air rifle "ON SAFE".
- Remove the air cylinder.
- Pull back the lever to open the bolt and push the pellet from the chamber by gently running the correct caliber cleaning rod through the muzzle.
- If a pellet is lodged in the barrel, see REMOVING A JAMMED PELLET.

4B. DECOCKING

- Always keep the muzzle pointed in a SAFE DIRECTION.
- Open the bolt by pulling the lever to the rear until it stops. Do not force rearward.
- Put the airgun in the "OFF SAFE" (Fire) position.
- Holding the lever so that it does not slam forward, pull the trigger with your other hand.
- Close the bolt by pushing the lever forward and the airgun is no longer cocked.

- Put the airgun "ON SAFE."

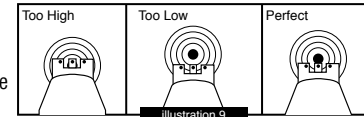
⚠ CAUTION: BE CAREFUL TO KEEP FINGERS CLEAR OF COCKING MECHANISM AND LOADING PORT (SEE "PINCH POINTS", ILLUSTRATION 8a&b).



STEP 5. AIMING SAFELY & ADJUSTING SIGHTS

5A. AIMING SAFELY

- Always keep your air rifle pointed in a SAFE DIRECTION.
- This airgun is designed for target shooting and is suited for both outdoor and indoor use. Always choose your target carefully. It is best to shoot at a paper bullseye target which is attached to a safe backstop. A heavy blanket should be hung behind the target backstop to prevent ricochet should you miss the backstop. Think about what you will hit if you miss the target.
- Do not shoot at hard surfaces or at the surface of water. The pellet may bounce off or ricochet and hit someone or something you had not intended to hit.
- This air rifle has open sights. Air rifles with this type of sight are correctly aimed when the front sight blade is positioned exactly in the notch of the rear sight. The top of the front sight blade should be even with the top of the notch in the rear sight. The bullseye should appear to rest on the top of the front sight (see illustration 9).



⚠ CAUTION: YOUR BACKSTOP SHOULD BE INSPECTED FOR WEAR BEFORE AND AFTER EACH USE. DISCONTINUE USE IF THE BACKSTOP SURFACE SHOWS SIGNS OF FAILURE. ALWAYS PLACE THE BACKSTOP IN A LOCATION THAT WILL BE SAFE SHOULD THE BACKSTOP FAIL. DISCONTINUE THE USE OF A BACKSTOP IF THE PROJECTILE REBOUNDS OR RICOCHETS.

5B. ADJUSTING SIGHTS

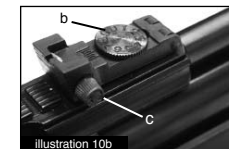
Front Sight Elevation adjustment (ill. 10a)

- If rifle shoots too low turn adjustment wheel (a) counter clockwise.
- If rifle shoots too high turn adjustment wheel (a) clockwise.



Rear Sight Elevation adjustment (ill. 10b)

- If rifle shoots too low turn adjustment wheel (b) counter clockwise.
- If rifle shoots too high turn adjustment wheel (b) clockwise.



Rear Sight Windage adjustment (ill. 10b)

- If rifle shoots left turn adjustment screw (c) clockwise.
- If rifle shoots right turn adjustment screw (c) counter clockwise.

STEP 6. FIRING

- Always make certain there is sufficient pressure for proper operation before firing.
- When you are absolutely sure your air rifle is aimed at a safe target and you are ready to fire, put your air rifle "OFF SAFE" (see STEP 1. OPERATING THE SAFETY).
- Squeeze the trigger.

⚠ WARNING: IF A PELLET DOES NOT FIRE AFTER COMPLETING THE OPERATION STEPS, THE GUN MAY BE JAMMED. AN UNFIRED PROJECTILE IN THE BARREL CAN BE A DANGEROUS SITUATION. KEEP AIRGUN POINTED IN A SAFE DIRECTION AND AND SEE "REMOVING A JAMMED PELLET".

REMOVING A JAMMED PELLET

If a pellet is jammed in the barrel, DO NOT RELOAD THE AIR RIFLE. NEVER LOOK DOWN THE MUZZLE.

- Cock the air rifle (see STEP 3A. COCKING THE AIR RIFLE), point the air rifle in a SAFE DIRECTION, put the air rifle in the "OFF SAFE" position and squeeze the trigger to fire.
- If the pellet did not discharge, follow these steps to remove the jammed pellet:
 1. Remove the air cylinder.
 2. Insert the correct caliber cleaning rod into the muzzle end and push the jammed pellet out of the breech. Do not try to reuse that pellet.

If you are not able to unjam your air rifle contact Umarex USA Service Department at www.UmarexUSA.com or 1-479-646-4210.

AMMUNITION

Your Hämmerli Air Rifle is designed to fire caliber .177 or .22 lead pellets only. We recommend the use of RWS Pellets because of their superb accuracy and dimensional uniformity. The correct caliber is clearly stamped on the breech block.

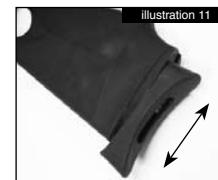
TRIGGER ADJUSTMENT

The Hämmerli Pneuma has two trigger adjustments. One adjusts the trigger pull and the other adjusts the trigger travel.

- Put the air rifle "ON SAFE", make sure it is unloaded and not cocked. Always keep the muzzle pointed in a SAFE DIRECTION.
- Remove the air cylinder.
- To adjust trigger travel turn the screw located in front of the trigger blade. The trigger guard does not have to be removed to adjust trigger travel. Turning the screw clockwise will shorten trigger travel. Turning the screw counterclockwise will lengthen trigger travel.
- To adjust trigger pull, remove the trigger guard to expose the screw located behind the trigger blade. To make the trigger pull lighter turn the screw clockwise. To strengthen the trigger pull turn the screw counterclockwise.

SHOULDER PAD ADJUSTMENT

Loosen the screw with an Allen (hex) wrench. Adjust pad for comfort. Tighten screw. (see illustration 11)



STORING YOUR AIR RIFLE

NEVER STORE A LOADED OR COCKED GUN. Unload pellet from the airgun. Keep air rifle away from children and untrained shooters. Store pellets separately from the air rifle. Protect your air rifle from moisture and dirt; clean airgun and wrap it in a smooth, dry cloth. If you are going to store your airgun for an extended length of time—remove the air cylinder from the air rifle and depressurize the cylinder (see STEP 2B), be sure the barrel is protected by coating the bore with RWS Spring Cylinder Oil. Always use a soft cloth. Remove the oil completely before the next use.

CARE AND MAINTENANCE

⚠ CAUTION: BEFORE ANY CARE, CLEANING, OR MAINTENANCE, ALWAYS BE SURE YOUR AIR RIFLE IS "ON SAFE" AND UNLOADED. KEEP IT POINTED IN A SAFE DIRECTION. IT IS IMPORTANT TO MAINTAIN YOUR AIRGUN PROPERLY.

VALVES AND O-RINGS: Keep the valve seals and O-rings lubricated to extend life.

- Place one to two drops of RWS Chamber Lube or silicone grease on the valve of the air cylinder each time you insert it into the air rifle.
- Place one drop of RWS Chamber Lube or silicone grease on each of the O-rings of the filling adapter before each use.



WORKING PARTS: The working parts require very little lubrication.

- The wearing surfaces at the cocking lever and the trigger mechanism should be lubricated with RWS Spring Cylinder Oil by applying one drop every 1000 shots.
- Put one drop of RWS Chamber Lube on the O-ring located on the nose of the bolt after every 1000 shots.

DO NOT USE PETROLEUM BASED LUBRICANTS WITH THIS AIRGUN. Petroleum based products MUST NOT be introduced into the high pressure chamber. This could result in an explosion resulting in personal injury or death. Remember, a little is good—a lot is not better.

BARREL: In day to day use, small amounts of dirt or residue will accumulate in the bore. This can be removed by using RWS Cleaning Pellets. Note: High quality RWS Lead Pellets not only increase accuracy, they help to reduce lead deposit. During periods of regular use the bore of the barrel should be cleaned periodically by means of a felt wad or cleaning rod with wool mop. Wire brushes should not be used.

SURFACE: The exposed metal parts MUST be wiped clean using a slightly oiled cloth after handling to prevent rust. Use light acid free and resin free oil. RWS Spring Cylinder Oil is excellent for this.

⚠ CAUTION: OILS THAT CONTAIN ACID OR RESIN CAN DAMAGE THE BREECH SEAL, COMPRESSION SEAL, AND POSSIBLY THE FINISH OF THE STOCK.

⚠ CAUTION: CHECK THE TIGHTNESS OF THE TRIGGER GUARD AND STOCK SCREWS BETWEEN, DURING, AND AFTER SHOOTING ACTIVITY. LOOSE SCREWS MAY CAUSE INJURY OR DEATH.

⚠ WARNING: A GUN THAT IS NOT OPERATING PROPERLY MAY BE DANGEROUS. IT SHOULD BE KEPT SAFELY FROM USE BY ANYONE UNTIL REPAIRED OR DESTROYED. DO NOT TRY TO TAKE THE GUN APART. IT IS DIFFICULT TO REASSEMBLE AND IMPROPER DISASSEMBLY OR REASSEMBLY CAN CAUSE SERIOUS INJURY OR DEATH.

DO NOT MODIFY YOUR AIR RIFLE

⚠ CAUTION: THE COMPONENTS OF YOUR AIRGUN WERE ENGINEERED AND MANUFACTURED TO DELIVER OPTIMUM PERFORMANCE. ANY MODIFICATION OR TAMPERING WITH YOUR AIRGUN MAY CAUSE A MALFUNCTION, WILL VOID YOUR WARRANTY, AND MAY MAKE IT UNSAFE TO USE. ANY CHANGE IN PERFORMANCE (SUCH AS A LOWERED TRIGGER PULL FORCE AND SHORTENED TRIGGER TRAVEL), INDICATES POSSIBLE MODIFICATION, TAMPERING, AND/OR WEAR. SUCH AIRGUN SHOULD BE INSPECTED, REPLACED, OR PROPERLY REPAIRED BY ONLY QUALIFIED UMAREX USA PERSONNEL. ANY AIRGUN THAT HAS BEEN DROPPED SHOULD BE CHECKED BY QUALIFIED PERSONNEL TO ENSURE THAT ITS FUNCTION HAS NOT BEEN AFFECTED.

WARRANTY AND REPAIR

Hämmerli Air Rifles have a One (1) Year Limited Warranty. A copy of the original purchase receipt is required for warranty repairs.

Do not return defective or damaged product to the dealer. Should any defect appear, call Umarex USA, phone 1-479-646-4210 for repair or replacement, at the option of the warrantor and to obtain an RA (Return Authorization) Number. Once you have received an RA Number, package the airgun carefully in a solid shipping box or case. Include a money order or check in the amount of \$30 to cover the cost of shipping and handling. The name, address, and phone number of the shipper must be included in the package, along with a note explaining the defect found. Write the RA number boldly on the outside of the box or case and return, prepaid to: Umarex USA, 6007 S 29th St., Fort Smith, AR 72908

DO NOT ATTEMPT TO DISASSEMBLE IT! Your airgun requires special tools and fixtures to repair it. Any disassembly or modification not performed by Umarex USA will void the warranty.

REVIEWING SAFETY

- Never point the airgun at any person or at anything you do not intend to shoot.
- Always treat the airgun as though it is loaded and with the same respect you would a firearm.
- Always aim in a SAFE DIRECTION. Always keep the muzzle of the airgun pointed in a SAFE DIRECTION.
- Always keep the airgun "ON SAFE" until you are ready to shoot.
- Always check to see if the airgun is "ON SAFE" and unloaded when getting it from another person or from storage.
- Always keep your finger off the trigger and out of the trigger guard until ready to shoot.
- You and others with you should always wear shooting glasses to protect your eyes. Normal reading glasses are not shooting glasses.
- If your reading or prescription glasses are not safety glasses make sure you wear shooting glasses over your regular glasses.
- Use the proper size BBs for your airgun.
- Never reuse ammunition.
- Do not shoot at hard surfaces or at the surface of water. The BB may bounce off or ricochet and hit someone or something you had not intended to hit.
- Place the backstop in a location that will be safe should the backstop fail.
- Your backstop should be checked for wear before and after each use. All backstops are subject to wear and will eventually fail. Replace your backstop if the surface is worn or damaged or if a ricochet occurs.
- Do not attempt to disassemble or tamper with your airgun. Unauthorized repairs or modifying the function of your airgun in any way may be unsafe and will void your warranty.
- Before you store your airgun, make sure it is unloaded, the CO2 cylinder is removed, and is "ON SAFE."

Hämmerli® trademark used under license from P.W. International.

UMAREXUSA

6007 South 29th Street, Fort Smith, Arkansas 72908 USA

Phone: 1-479-646-4210 www.UmarexUSA.com

11R08

©2008