

OWNER'S MANUAL

MAYHEM 45

BB45 LADY

BB.45

Use only CO2 cartridge which are the 12 gram type 4.5mm BB's

Take "off" safety- position safety on "F"

When you are certain that the target, back-stop and surrounding area is safe, position the safety "F" (Fig.8) pulling the trigger now will fire the gun.

Fire

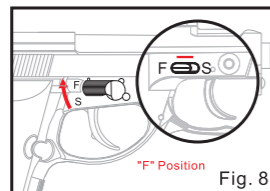
Make sure the gun is pointed at a safe target. Once the last BB has been shot from the gun, it is still possible for the trigger to be pulled, but only CO₂ will be discharged.

Put "ON"safety- on "S"position

After firing, return the safety to the "ON" position on "S" position.(Fig. 1)

WARNING

- 1.Even though you go through the unloading procedure, continue to treat the airgun as though it were loaded. Do not point it at anything you do not intend to shoot.
- 2.After a shooting is complete, the gun should be unloaded before storing it. To unload the gun always put "ON" safe "S" position, remove the CO₂ cartridge, and remove the BB's From the magazine.
- 3.High temperatures can produce pressure in the CO₂ cartridge and gun that is considerably higher than normal operating pressure. Such increased pressure may prevent the pistol from firing and may result in permanent damage to the gun. The maximum operating or storage temperatures can easily be reached if the gun is left directly in the sun on a bright, sunny day. Therefore the shooter should not expose the pistol to high temperature conditions or direct sunlight for any extended period of time.
- 4.Rapid firing of the gun will cause temperature reduction in the pistol and CO₂ gas. This will result in lower BB velocities and may even lower gas pressure enough so that the pistol will not fire. This condition can be avoided by allowing more time between shots. This permits the gas to increase in temperature and pressure, and produce normal velocities.
- 5.Care should be exercised to ensure that the gun is not shot with a CO₂ cartridge that is low in pressure because a BB may not be expelled from the barrel.
- 6.A CO₂ cartridge contains gas under pressure, whether or not it has been inserted into a gun. If exposed to high temperatures (such as inside of a closed car in direct sunlight), it could explode. Be sure to store all cartridge in a cool place.



OPERATION MANUAL

WARNING Not a toy. Adult supervision required. Misuse or careless use may cause serious injury or death read and follow it carefully. All instructions before using. This is a high power air gun recommended for use by those 16 years of age or older. **May be dangerous up to 224 yards (204.8256 meters).**

WARNING Be sure gun is always pointed in safe direction never point the gun at anyone. Always assume and treat the gun as if it were loaded and ready to fire.

WARNING Never store a loaded gun. At the end of a shooting session. As a safety precaution, always put "on" safety "S" position. Remove CO₂ cartridge then take out magazine and remove the rest of BB's. Store in a safe place to prevent unauthorized use.

WARNING Do not brandish or display this airgun in public - it may confuse people and may be a crime. Police and others may think it is a firearm. Do not change the coloration and markings to make it look more like a firearm. That is dangerous and may be a crime.

YOU AND OTHERS WITH YOU SHOULD ALWAYS WEAR SHOOTING GLASSES TO PROTECT YOUR EYES.

READ ALL INSTRUCTIONS BEFORE USING.

BUYER AND USER HAVE THE DUTY TO OBEY ALL LAWS ABOUT THE USE AND OWNERSHIP OF THIS AIRGUN.

THIS AIRGUN IS INTENDED FOR USE BY THOSE 16 YEARS OF AGE OR OLDER.

Reviewing Safety

- Never point the airgun at any person or at anything you do not intend to shoot.
- Always treat the airgun as though it is loaded with the same respect you would a firearm.
- Always keep the airgun "ON SAFE" and until you are ready to shoot.
- Always check to see if your airgun is "ON SAFE" and unloaded when getting it from another person or from storage.
- Always keep your finger off the trigger and out of the trigger guard until you are ready to shoot.
- You and others with you should wear shooting glasses to protect your eyes.
- If your reading or prescription glasses are not safety glasses, make sure you wear shooting glasses over your regular glasses.
- Use the proper size BB for your airgun.
- Never reuse ammunition.
- Do not shoot at hard surfaces or at the surface of water. The BB may bounce off or ricochet And hit someone or something you had not intended to hit.
- Place the backstop in a location that will be safe should the backstop fail.
- Your backstop should be checked for wear before and after each use. All backstops are subject to wear and will eventually fail. Replace your backstop if the surface is worn or damaged or if a ricochet occurs.
- Do not attempt to disassemble or tamper with your airgun. Use an Authorized Repair Center. Using unauthorized repair centers or modifying the function of your airgun in any way may be unsafe and will void your warranty.
- Before you store your airgun, make sure it is unloaded, not charged, and is "ON SAFE."

Specifications

BB 45

Mechanism	Semi-Auto Fire	Sights	Fixed, Fiber Optic
Power Source	12 gram CO2 Cartridge	Safety	Lever
Caliber/Ammunition	BB cal. (4.5mm)	Velocity	430 fps
Clip	19 BBs		

Mayhem 45

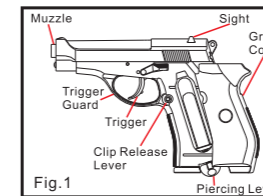
Mechanism	Semi-Auto Fire	Sights	Fixed, Fiber Optic
Power Source	12 gram CO2 Cartridge	Safety	Lever
Caliber/Ammunition	BB cal. (4.5mm)	Velocity	430 fps
Clip	19 BBs		

Please read this owner's manual completely. And remember, this airgun is not a toy. Treat it with the same respect you would a firearm. Always carefully follow the safety instructions found in this owner's manual and keep this manual in a safe place for future use.

If you have any questions regarding your new air pistol, please contact Aftermath at 954-302-1086 or www.aftermathairsoft.com and ask for Customer Service.

Learning the Parts of Your New Air Pistol

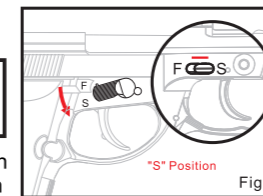
Learning the Parts of Your New Soft Air Pistol Learning the names of the parts of your new soft air pistol will help you to understand your owner's manual. Use this manual to increase your enjoyment of this soft air pistol (Fig.1)



Push down the Safety Button to "S" Position

WARNING Keep the pistol in the "ON SAFE" position until you are actually ready to shoot.

Push down the safety button to "S" position (Safety on see Fig. 2) The trigger cannot be pulled to fire the gun in this position.



Insert CO2 Cartridge

WARNING CO₂ cartridges may explode at temperatures above 120°F (48.9°C). Do not mutilate or incinerate them. Do not expose them to heat or store CO₂ cartridges at temperatures above 120°F (48.9°C).

WARNING Keep hands and face away from escaping CO₂ gas. It can cause frostbite if allowed to come in contact with skin. Always make sure the CO₂ cartridge is empty before attempting to remove it from the airgun by simply turning the knob counter-clockwise all the way until you no longer hear the escape of CO₂ gas.

Performance

Many Factors affect velocity, including brand of projectiles, type of projectile, amount of CO₂ in cartridge, lubrication, barrel condition and temperature.



DO NOT RETURN THIS PRODUCT TO THE STORE

Our friendly customer service representatives will be glad to help. You can get answers to frequently asked questions at www.aftermathairsoft.com or you can contact us directly at 1-954-302-1086

Repair Service

If your airgun needs repair, we recommend you take or send it to your nearest Aftermath Authorized Repair Center. DO NOT ATTEMPT TO DISASSEMBLE IT! Your airgun requires special tools and and fixtures to repair it. Any disassembly or modification not performed by an Authorized Repair Center will void the warranty.

A Special Customer Service

Aftermath Authorized Repair Centers will unjam your airgun at no cost during the warranty period.

Limited One Year Warranty

This product is warranted to the retail consumer for one year from date of retail purchase against defects in material and workmanship and is transferable. To register the serial number of your airgun, please return the airgun registration form.

What is Covered?

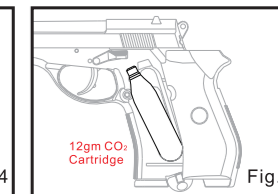
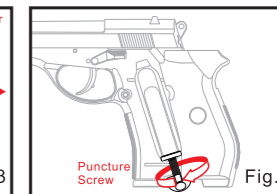
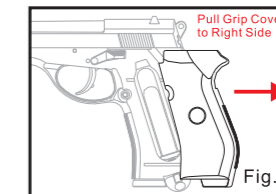
Replacement parts and labor. Transportation charges to consumer for repaired product.

What is Not Covered?

Transportation charges to Authorized Repair Centers for defective product. Damages caused by abuse, modification or failure to perform normal maintenance - See Owner's Manual. Any other expense. CONSEQUENTIAL DAMAGES, INCIDENTAL DAMAGES, OR INCIDENTAL EXPENSES INCLUDING DAMAGE TO PROPERTY. SOME STATES DO NOT ALLOW THE EXCLUSION OR LIMITATION OF INCIDENTAL OR CONSEQUENTIAL DAMAGES SO THE ABOVE LIMITATION OR EXCLUSION MAY NOT APPLY TO YOU.

WARNING Use only CO₂ cartridge which are the 12 gram type.

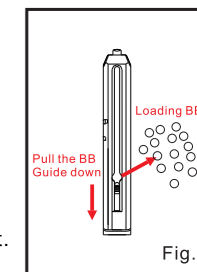
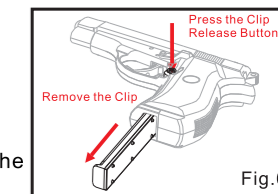
- 1.Always point gun in a safe direction. Push down the safety button to "S" position.
- 2.Pull grip cover from left to end of right side.(See. Fig. 3)
- 3.Turn puncture screw counterclockwise until there is enough room to insert a CO₂ cartridge.(See. Fig.4)
- 4.Insert the CO₂ cartridge into the grip, first placing the larger end of the CO₂ cartridge into the lower portion of the grip(See. Fig.5)
- 5.With muzzle pointed in a safe direction, turn puncture screw clockwise to puncture the CO₂ cartridge continue turning rapidly until finger tight.
- 6.Push grip cover to original left position.



Loading BB's

BB cal. (4.5mm)

- 1.Make sure the pistol is "ON SAFE" "S" position (Fig.1)
- 2.Point the pistol in a SAFE DIRECTION.
- 3.Press the clip release button and remove the clip from the bottom of the grip frame.(Fig. 6)
- 4.Pull the BB guide down to the bottom and hold on the guide.(Fig. 7)
- 5.Insert up to 19 BB's into the magazine.
- 6.Release the BB guide.
- 7.Insert the loaded clip back into the bottom of the grip frame until you hear a click indicating the clip is security locked into place.



Aim at a Safe Target

Due to the power of the model CO₂, use extra precaution in selecting a safe target. Improper targets may cause ricochet.

How to Obtain Warranty Performance

U.S Customers - Locate nearest authorized service center (see www.aftermathairsoft.com or call Aftermath Customer Service at 1-954-302-1086 for a list of service centers.)

International Customers - Please return product to your nearest distributor. If you do not know your distributor, please call 1-954-302-1086 and ask for international customer assistance.

Implied Warranties

ANY IMPLIED WARRANTIES INCLUDING THE IMPLIED WARRANTIES OF MERCHANTABILITY AND FITNESS FOR A PARTICULAR PURPOSE ARE LIMITED IN DURATION TO ONE YEAR FROM DATE OF RETAIL PURCHASE. SOME STATES DO NOT ALLOW LIMITATIONS ON HOW LONG AN IMPLIED WARRANTY LASTS SO THE ABOVE LIMITATIONS MAY NOT APPLY TO YOU.

To the extent any provision of this warranty is prohibited by federal, state or municipal law, which cannot be preempted, it shall not be applicable. This warranty gives you legal rights and you may also have other rights, which vary, from state to state.